

Otis Spunkmeyer®

PRE-PORTIONED

COOKIE DOUGH



PAY WITH
CREDIT OR DEBIT

TEXT **PAY**
TO 555888



14 DELICIOUS COOKIE DOUGH FLAVORS

+ CONVENIENT ALLERGEN & KOSHER INDEXES



1945



1967

1945 WHITE CHOCOLATE MACADAMIA NUT

Chocolate blanco y nuez de macadamia. Loads of white chocolate chips and chunks of macadamia nuts make every bite of this delicious cookie absolutely unforgettable. **UD** Contains: **Tree nut* \$19.00**

1967 CRANBERRY OATMEAL

Arándano y avena. Whole rolled oats with chewy dried cranberries and a subtle hint of cinnamon make this a touch of sugar, spice and everything nice. **UD** Contains: *** \$19.00**

2011 CHOCOLATE REESE'S PIECES

Galleta de Reese's Pieces de chocolate. Chocolate cookie dough loaded with Reese's Pieces® candies for a peanut buttery and chocolate delight! **UD** Contains: *** \$19.00**



2011



1900

1900 BUTTER SUGAR

Azucar. Creamy butter blended with just the right balance of sugar makes this classic cookie taste just like it was baked from scratch. **UD** Contains: *** \$19.00**

2022 BUTTER TOFFEE CRUNCH

Galleta con caramelo de dulce de leche crujido. Bits of chewy toffee combined with pieces of milk chocolate mixed perfectly within a sweet cookie dough. **UD** Contains: **Tree nut - Almond* \$19.00**

2037 CHOCOLATE CHIP PECAN

Chispas de Chocolate y pecanas. Semi-sweet chocolate chips, white chocolate chips, and pecan pieces folded into rich cookie dough undeniably create the ultimate chocolate chip pecan cookie experience.. Contains: **Tree Nut - Pecan* \$19.00**



2022



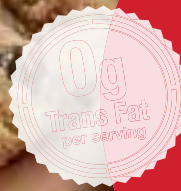
2037

OtisSpunkmeyer

36 Pre-Formed Cookies per Box

No Partially Hydrogenated Oils

No Added Preservatives





\$19
MINT CHOCOLATE
CHUNK

1876 MINT CHOCOLATE CHUNK

Chocolate y menta. Rich Barry Callebaut® Belgian chocolate chunks and refreshing mint confections folded into chocolate dough celebrates a classically indulgent combination. **UD**
Contains: 🌾 🥚 🍪 🥥 * **\$19.00**

1923 CARNIVAL CANDIES

Carnaval. Colorful semi-sweet confection-covered chocolate candies make this cookie fun to look at - and even more fun to eat. **UD**
Contains: 🌾 🥚 🍪 🥥 * **\$19.00**

1956 TRIPLE CHOCOLATE CHUNK

Galleta con triple chispas de chocolate. Silky pieces of rich dark chocolate, milk chocolate and white chocolate come together to create a dreamy triffecta of chocolaty decadence. **UD**
Contains: 🌾 🥚 🍪 🥥 * **\$19.00**

1887 SNICKERDOODLE

Canela y azúcar. Cinnamon and sugar combine in harmonious flavor for a warm, sweet, aromatic taste that's even better than you remember. **UD**
Contains: 🌾 🥚 🍪 🥥 * **\$19.00**

1865 OATMEAL RAISIN

Avenas y pasas. Rolled oats, plump California raisins and aromatic cinnamon spice combine for a delightful taste that provides the ultimate comfort of home. **UD** Contains: 🌾 🥚 🍪 🥥
🥥 Tree nut - Coconut* **\$19.00**



1923



1956



1887



1865

*Food may be produced in a facility that processes nuts, milk, soy, egg and wheat. Please see product label.

**1911
PEANUT BUTTER**

Mantequilla de cacahuate.

Creamy peanut butter and crunchy peanuts in every bite are the perfect combination of sweet and salty in this chewy peanut butter cookie. **UD**

Contains:     
Peanut*





\$19.00



\$19





PEANUT BUTTER

1898 CHOCOLATE CHIP

Chispas de chocolate. Semi-sweet chocolate chips folded into rich, buttery cookie dough create the ultimate chocolate chip cookie experience. **UD** Contains:     * **\$19.00**



1934 STRAWBERRY SHORTCAKE

Pastel de fresca. White confectionery chips, sweet dried strawberries and tart dried cranberries combine for a blast of delectable flavor, you'll savor every bite. **UD** Contains:     * **\$19.00**



FAMILY AND FRIENDS NATIONWIDE SHOP ONLINE TO SUPPORT YOU & YOUR GROUP AT

SHOPBELIEVE.COM

Product Information: 2.5-pounds of pre-portioned cookie dough (36 pre-formed cookies) that go from the freezer to the oven. Keep frozen up to one year. No preservatives added.

NOTE: Food products may be manufactured in a facility that also processes nuts, milk, soy, egg, wheat, FD&C Yellow #5 and FD&C Yellow #6. Please see product label or call for allergy information, complete ingredients list and Kosher certification information.

KOSHER INDEX: **UD** ORTHODOX DAIRY

ALLERGEN INDEX:  EGG  WHEAT  MILK  SOY  NUTS



#F1920-OTPP